

## NeoLIVE R2 Firmware Update

### Firmware Overview:

Date	MCU	FPGA	Description
0824	V0.26	V3.01	<ol style="list-style-type: none"> <li>1. UI update</li> <li>2. Support 1080P 29.97/30/50/60 format on all input channel</li> <li>3. USB webcam driver update</li> </ol>
0927	V1.02	V4.04	<ol style="list-style-type: none"> <li>1. UI Update</li> <li>2. Add quick scene function</li> <li>3. Add more transition effects</li> <li>4. Add audio meter on PVW</li> <li>5. Add 12/24-hour mode and time countdown</li> <li>6. Add fast switching and T-bar switching mode by MENU+SCENE key</li> <li>7. Optimize Chromakey Operation</li> <li>8. Push Volume knob to mute and recover master audio</li> <li>9. Optimize device boot process</li> </ol>
1115	V1.15	V4.28	<ol style="list-style-type: none"> <li>1. Optimize the mute and recover operation.</li> <li>2. Add stinger transition</li> <li>3. Input format compatibility-Support i format</li> <li>4. Add quick PTZ preset recall</li> </ol>
1119	V1.17	V4.31	<ol style="list-style-type: none"> <li>1. Add Logo function. Logo size within 480x540.</li> <li>2. Add graphic slide from L to R.</li> <li>3. Add Audio delay function. (0-500ms)</li> <li>4. Fixed audio AFV mode bug.</li> <li>5. Fixed Chromakey bug.</li> <li>6. Optimize Chromakey operation with color picker.</li> </ol>
1210	V1.19	V4.37	<ol style="list-style-type: none"> <li>1. Fixed chromakey bug with auto color picker.</li> <li>2. Add graphic slide transition from T to B.</li> <li>3. Fixed switching with empty source.</li> <li>4. Fixed pixel shift issue.</li> <li>5. Optimize audio mode switching.</li> </ol>
0126	V1.21	V4.38	<ol style="list-style-type: none"> <li>1. Optimized audio mode switching (Long press AFV/FIXED)</li> <li>2. Fixed chromakey color picker position.</li> <li>3. Optimized stinger transition operation. (Allow adjustment for PST and PTZ in stinger transition)</li> <li>4. Optimized PTZ operation. (Long press volume knob to save current PTZ preset point, no need access to PTZ menu)</li> <li>5. Set default IP to 192.168.5.150. Set default PTZ port in 52381 for easier PTZ control setup</li> </ol>

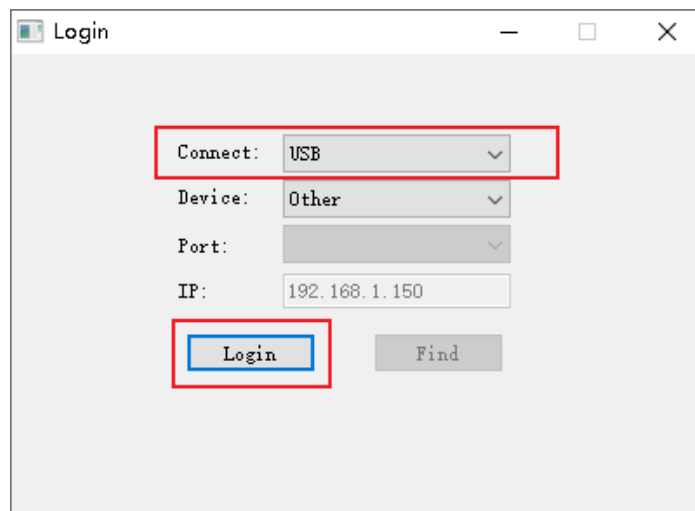
6. Optimized scene transitions in fast switching mode
7. Fixed some menu operation bug.
8. Add notes for some operation.
9. Optimized save system. Exit menu to save parameters.
10. Optimized graphic slide transition parameter setting.
11. Output format support 1080P30/50/60.

**Guidance:**

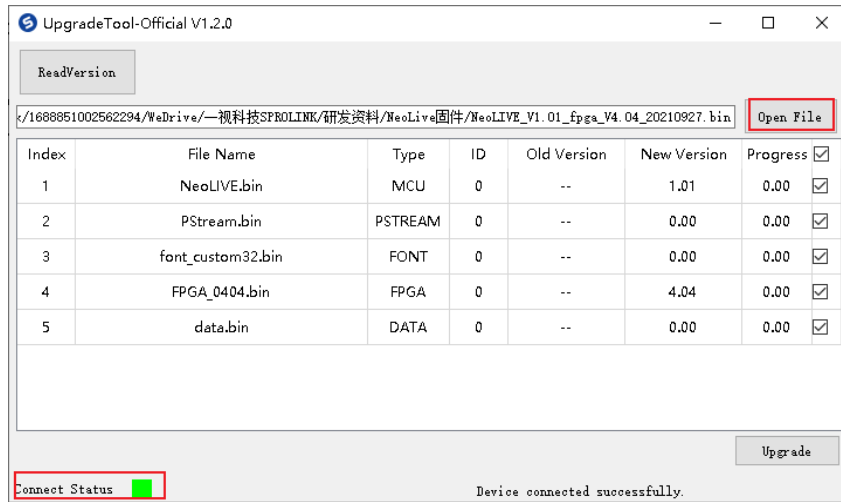
1. Download NeOLIVE Upgrade tool and firmware on laptop.
2. Use USB cable and connect STILL|CTL port of NeOLIVE R2 with laptop for firmware update. The virtual disk will pop out if USB cable is connected well.



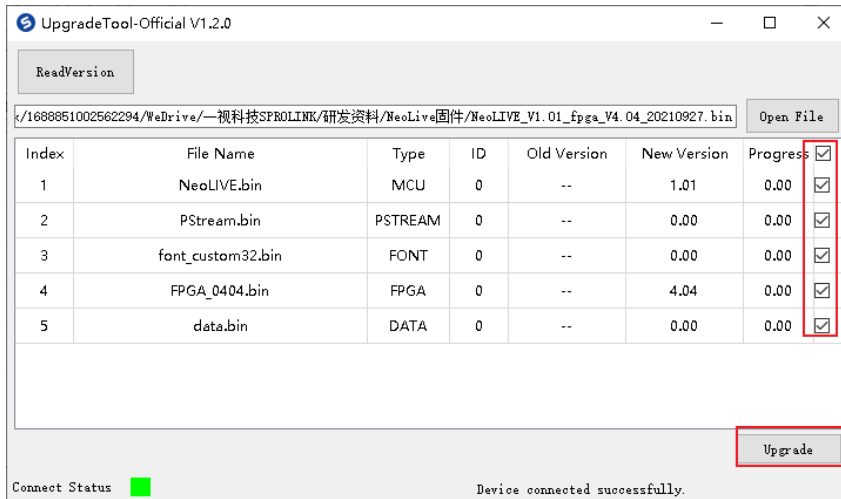
3. Turn on the upgrade tool choose connection as USB and click Login.



4. The bottom indicator will light green if communicate successfully. Click open file to choose the firmware.



5. Choose the related items for update. And Click Upgrade button to start firmware update.



6. After finish update replug the power cable to restart device. Click Menu button, go to system to check system info.